

# Jade



**Jade** 735↑ × 500↔ SX  
colour: Heban

3-axis thermostatic valve set, left, chrome  
Pipe-masking set, chrome





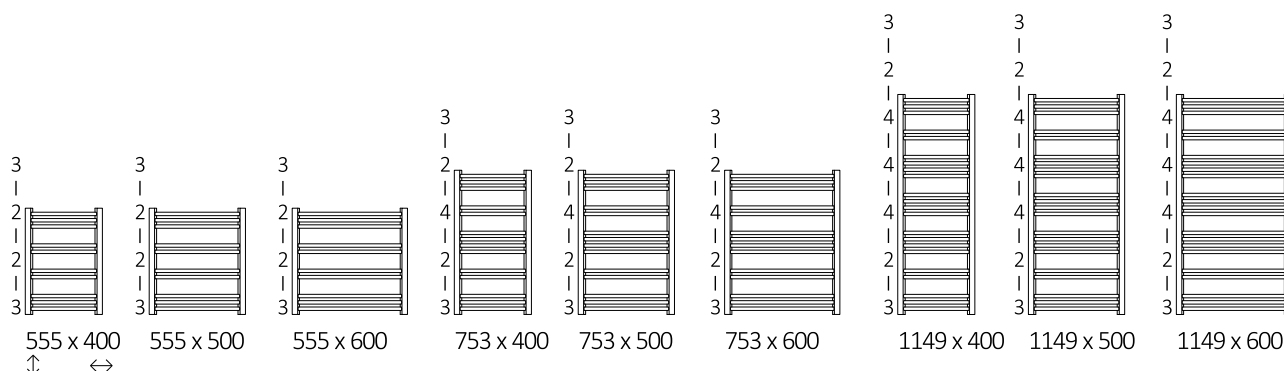
colour included  
in the price

Design: Terma

## Standard connection:



## Available sizes:



## Specification:

Working pressure: 1000 kPa Maximum operating temperature: 95°C

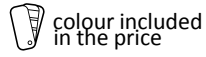
A ↓ [mm]	B ↔ [mm]	C2 [mm]	75/65/20°C [W]	55/45/20°C [W]	Cr [W]	D [mm]	E [mm]	F [mm]	H [dm³]	 [kg]	Product code <small>Configuration code p. 5</small>
-------------	-------------	------------	-------------------	-------------------	-----------	-----------	-----------	-----------	------------	----------	--

### Paint

555	400	364	200	108	200	240	396	79,5	1,46	3,38	WGQ15055040
555	500	464	230	124	200	340	396	79,5	1,65	3,93	WGQ15055050
555	600	564	267	144	300	440	396	79,5	1,84	4,47	WGQ15055060
753	400	364	270	145	300	240	594	79,5	2,01	4,64	WGQ15075040
753	500	464	313	168	300	340	594	79,5	2,28	5,41	WGQ15075050
753	600	564	363	195	400	440	594	79,5	2,55	6,17	WGQ15075060
1149	400	364	412	221	400	240	990	79,5	3,11	7,17	WGQ15114040
1149	500	464	478	256	400	340	990	79,5	3,54	8,38	WGQ15114050
1149	600	564	555	297	600	440	990	79,5	3,95	9,56	WGQ15114060

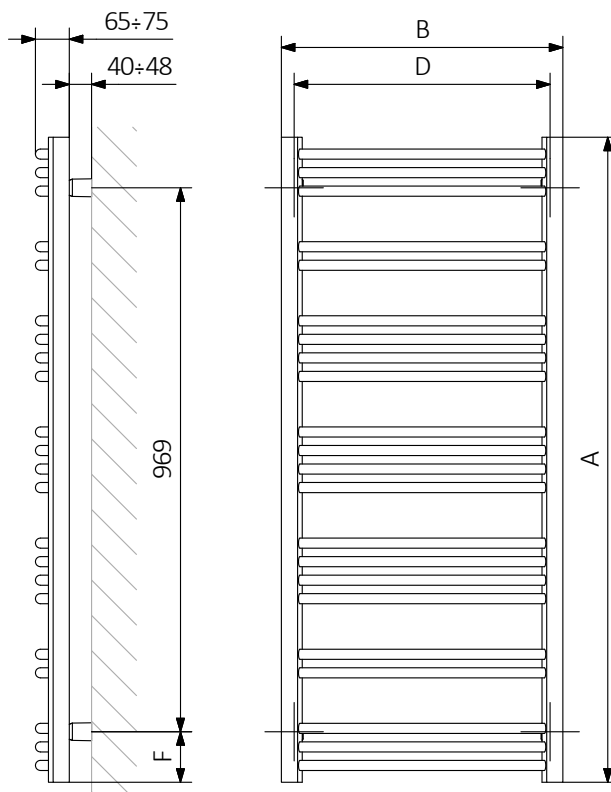
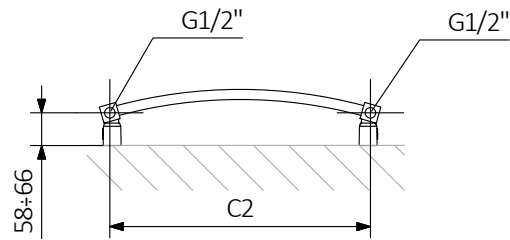
### Plating

555	400	364	133	68	120	240	396	79,5	1,46	3,25	WGQ15055040
555	500	464	153	78	120	340	396	79,5	1,65	3,78	WGQ15055050
555	600	564	177	90	200	440	396	79,5	1,84	4,30	WGQ15055060
753	400	364	180	92	200	240	594	79,5	2,01	4,47	WGQ15075040
753	500	464	208	106	200	340	594	79,5	2,28	5,20	WGQ15075050
753	600	564	241	123	300	440	594	79,5	2,55	5,93	WGQ15075060
1149	400	364	275	140	300	240	990	79,5	3,11	6,89	WGQ15114040
1149	500	464	320	163	300	340	990	79,5	3,54	8,05	WGQ15114050
1149	600	564	371	189	400	440	990	79,5	3,95	9,19	WGQ15114060



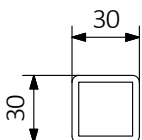
## Technical drawing:

SX

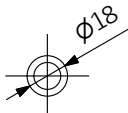


A – Height B – Width C1-C5 – Distance between pipe centres D – Horizontal distance between mounting bracket centres  
E – Vertical distance between mounting brackets F – Distance between a mounting bracket and the bottom of the radiator

**Collector:**



**Pipe:**





In the table with technical data, the last column lists product codes. When placing an order, please remember to quote the product code followed by the configuration code as shown in the diagram below:

## The construction of a water and dual fuel radiator product and configuration code:

WGQ15055040

K916SX

PRODUCT CODE  
(located in the table for the product)

CONFIGURATION CODE  
(supplemented by hand)

### Example Configuration

K 916 SX

Package code

Colour code

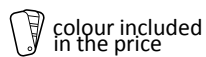
Connection code

*K - carton box*

## Epoxy primer

**E** - Code of epoxy primer is an extra processes.

WGQ15055040 K916SX **E** — *Extraprocesses or additions code*



## Legend



Radiator available in a "water" version.



Radiator suitable for dual fuel connection. Electric heating element can be installed.



Radiator available in electric only version. It comes prefilled with a 'heating medium' and equipped with a heating element. All tested and ready to use.



Connection types dedicated for this radiator. The icon shows the flow and return connections for the radiator as well as the thermostatic valve and heating element position if applicable.



Suggested heating element power output for electric and dual fuel versions.



Weight.



Capacity.



Available in chrome finish.



No additional payment for a color.